

Assignment

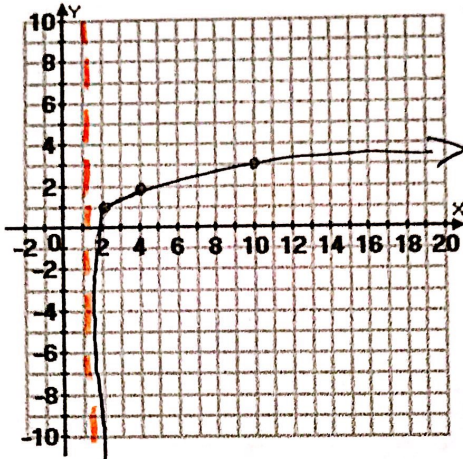
*asymptote  
change the sign*

Complete the table of values and graph the following logarithmic functions.

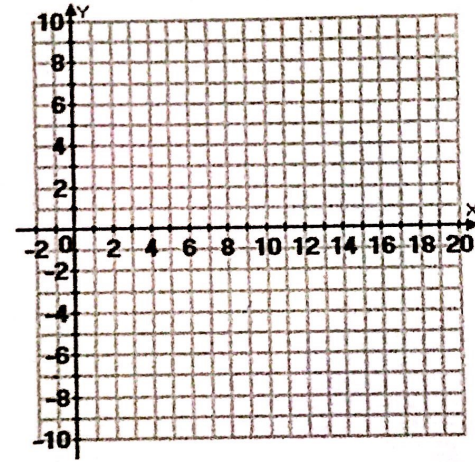
1)  $y = \log_3(x-1) + 1$   $y = \frac{\log(x-1)}{\log(3)} + 1$

2)  $y = \log_{1/2}(x+2) + 4$

x	y
2	1
4	2
10	3



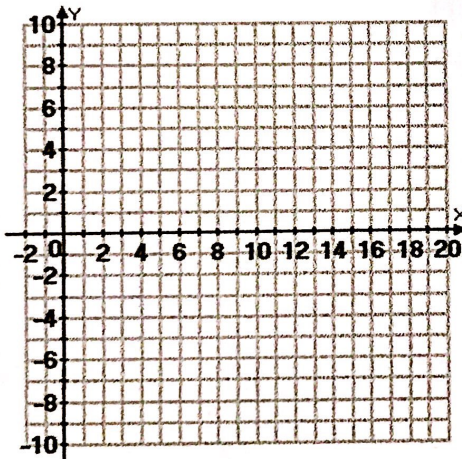
x	y



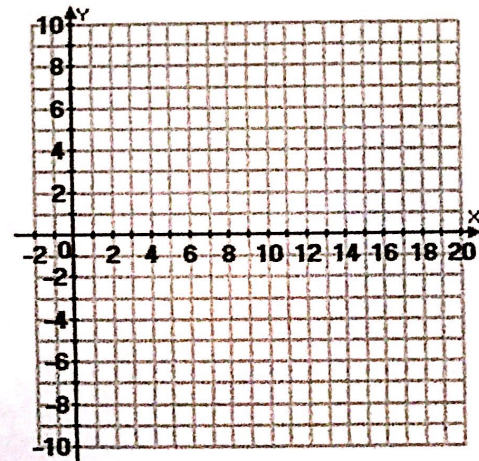
3)  $y = \log_4(x) - 5$

4)  $y = -\log_{1/3}(x-2)$

x	y



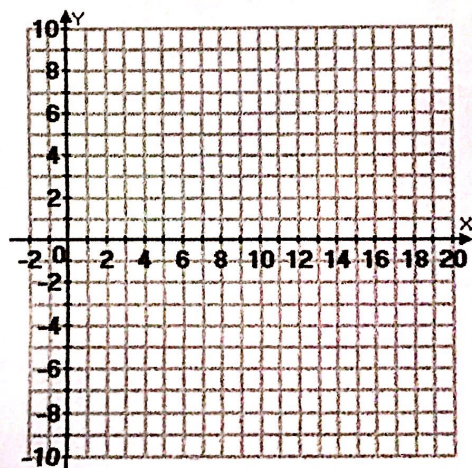
x	y



5)  $y = 3\log_2(x)$

6)  $y = 2\log_{1/4}(x+1) - 3$

x	y



x	y

